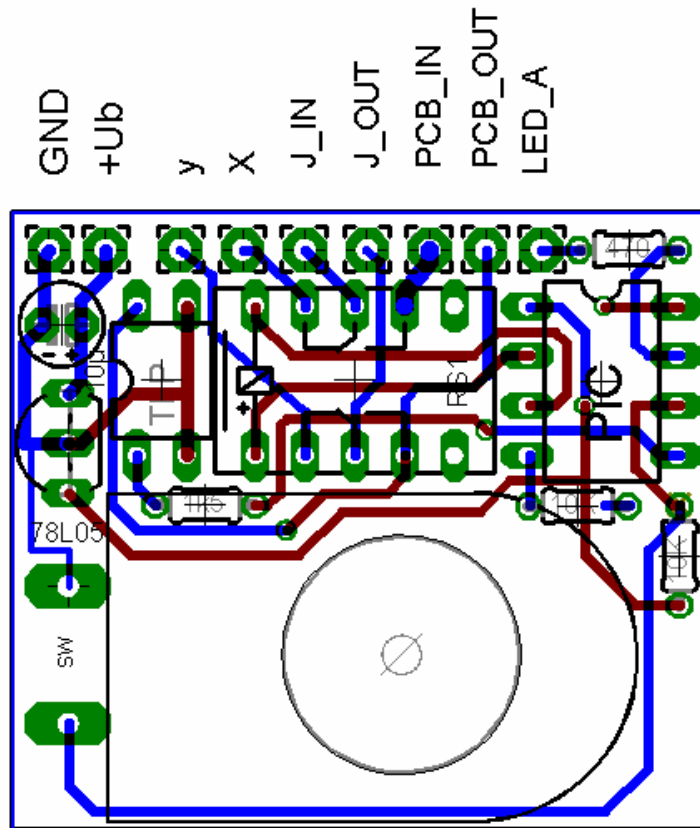


Manual PIC switching relay Bypass with mute

Seite 2.....Bill of material
Seite 3.....soldering pcb
Seite 4.....external wiring/ circuit

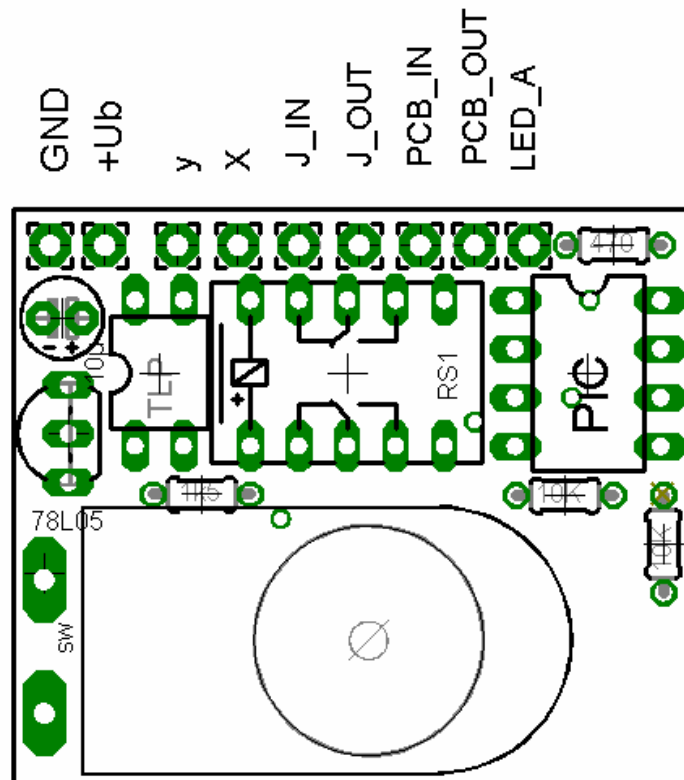


bill of material

Quantity	Description
1	PCB
1	Relay A5-WK
1	78L05 Voltage regulator
1	Optocoupler TLP222G
1	Preprogrammed PIC12F675
1	Socket 8-pole
1	switch PBS24-4B
1	Some colored wire
1	Resistor 470R (yellow/violet/black/black/brown)
1	Resistor 1K5 (brown/green/black/brown/brown)
2	Resistor 10K (brown/black/black/red/brown)
1	Electrolytic capacitor 10 μ F/25V oder 35V

Soldering pcb

First the printed circuit board is assembled according to the assembly diagram shown below. For this purpose, one should start with the lowest components, i.e. first the resistors, capacitors, voltage regulators and finally the socket and the relay. Possible pull-down resistors for effects should be kept.



Application and wiring

wiring for normal effects

